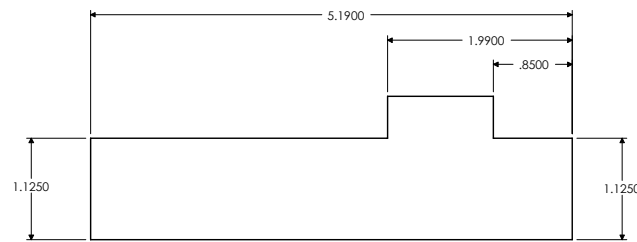
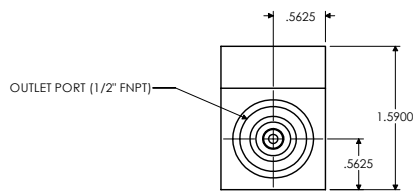
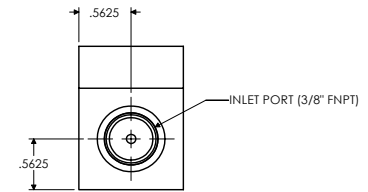


ISOMETRIC VIEW



SIDE VIEW

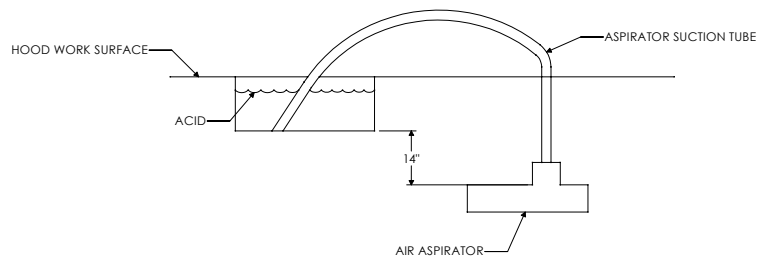


RIGHT END VIEW

ASPIRATOR OPERATION NOTES

1. THE BEST FLOW CAN BE OBTAINED BY INITIATING THE SIPHON BY ACTIVATING THE ASPIRATOR WITH 30 PSI OF AIR FOR 5 - 10 SECONDS. THE AIR SUPPLY CAN THEN BE STOPPED AND THE ASPIRATOR WILL CONTINUE THE SIPHONING ACTION.
2. FOR BEST SIPHON ACTION THE ASPIRATOR SHOULD BE MOUNTED APPROXIMATELY 14" BELOW POINT OF SUCTION.
3. VISCOSITY VARIATIONS IN FLUIDS BEING SIPHONED CAN CAUSE VARIATIONS IN PERFORMANCE.

SPECIFICATIONS	
VACUUM RATING - MIN/MAX INCHES OF Hg	2.5/6.0
AIR PRESSURE - MIN/MAX PSIG (kPa)	20/60 (138/414)
FLOW RATE - MIN/MAX GPM	0.5/1.0
MAX TEMPERATURE - MEDIA °F (°C)	302 (150)
MAX TEMPERATURE - AMBIENT °F (°C)	140 (60)



PART	MATERIAL
BODY	PTFE
NOZZLE	PTFE

TOLERANCES UNLESS OTHERWISE SPECIFIED	DYTEC 102 COMPASS PT. DR. STE. D. ST. CHARLES, MO. 63301-4414 (636) 949-5600		ASA-0006P-TFE ASPIRATOR PHYSICAL DIMENSIONS			
			APPROVAL ENG: GA DATE: DATE	DWN BY: MPJ SHEET: 1 OF 1	DATE: 02/17/03	SCALE: 1=1
ALL DIMENSIONS ARE IN INCHES						
PATH = E:\CC\DYTEC\ASA-0006P-TFEP.SLDDRW						