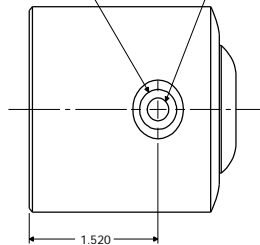
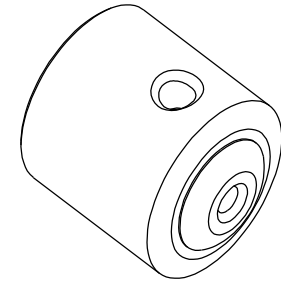


OULET PORT (1/4" FNPT) 1/4" ORIFICE

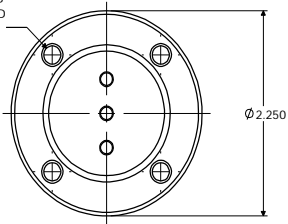


TOP VIEW

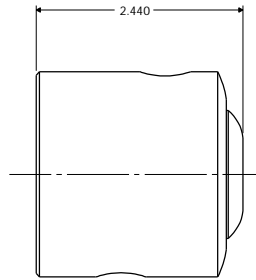


ISOMETRIC VIEW

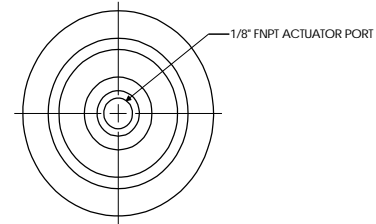
1/4-20UNC-2B X .875 DEEP
4 HOLES EQUALLY SPACED
ON A 1.810 DIA BC



LEFT END VIEW



SIDE VIEW

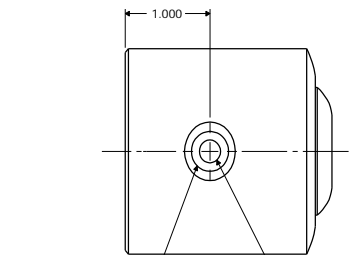


RIGHT END VIEW

PART	MATERIAL
BODY	POLYPROPYLENE
PISTON	POLYPROPYLENE
END CAP	POLYPROPYLENE
O-RINGS	VITON
SPRING	302 STAINLESS STEEL

SPECIFICATIONS

Cv	0.8
MAX PRESSURE - INLET PSIG (kPa)	80 (551)
MAX MEDIA TEMPERATURE ° F (° C)	160 (70)
ACTUATOR PRESSURE - MIN/MAX PSIG (kPa)	35/70 (241/482)



BOTTOM VIEW

INLET PORT (1/4" FNPT) 1/4" ORIFICE

TOLERANCES UNLESS OTHERWISE SPECIFIED

DYTEC

102 COMPASS PT. DR. STE. D.
ST. CHARLES, MO. 63301-4414
(636) 949-5600

GPV-2C4P-POL-V GENERAL PURPOSE VALVE PHYSICAL DIMENSIONS

APPROVAL		DWN BY	MPJ	DATE	SCALE	1-1	CHKD BY
ENG	DATE			12/5/01			
GA	DATE			44	0002331		30 00

ALL DIMENSIONS ARE IN INCHES
PATH: E:\VCC\DYTEC\GPV-2C4P-POL-V\SLDORW